

**P 220 B** *Light Class*

**PALFINGER**

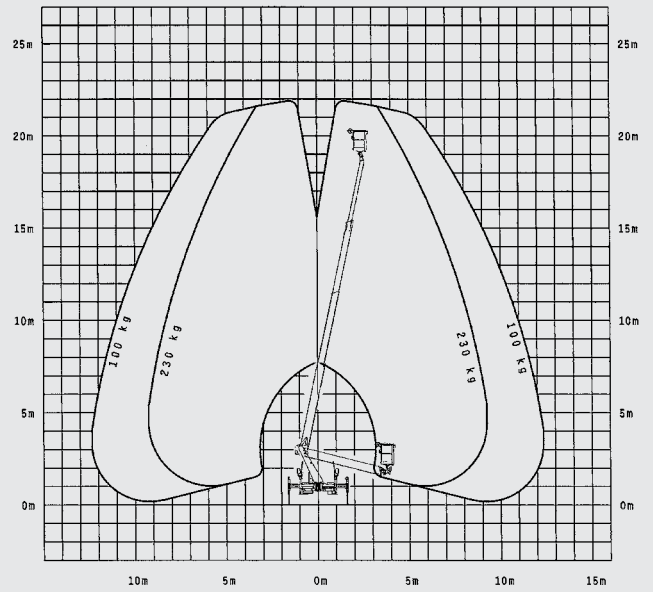
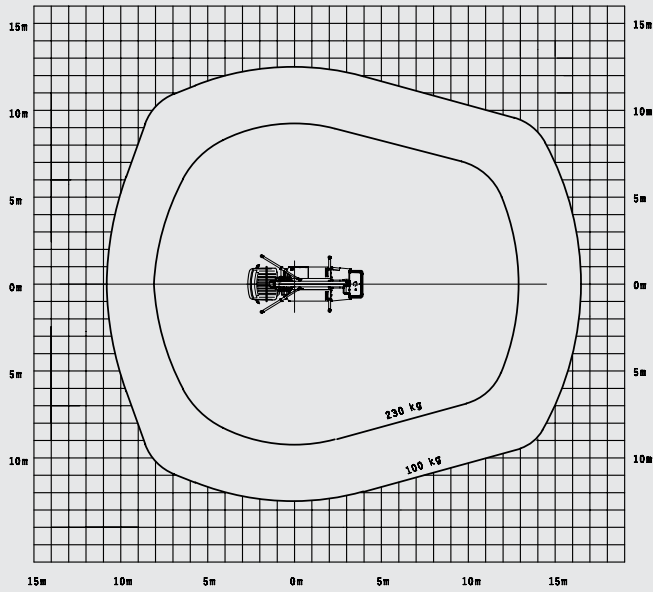
LIFETIME EXCELLENCE

**MANY AREAS OF USE. ONE RECIPE FOR SUCCESS.**

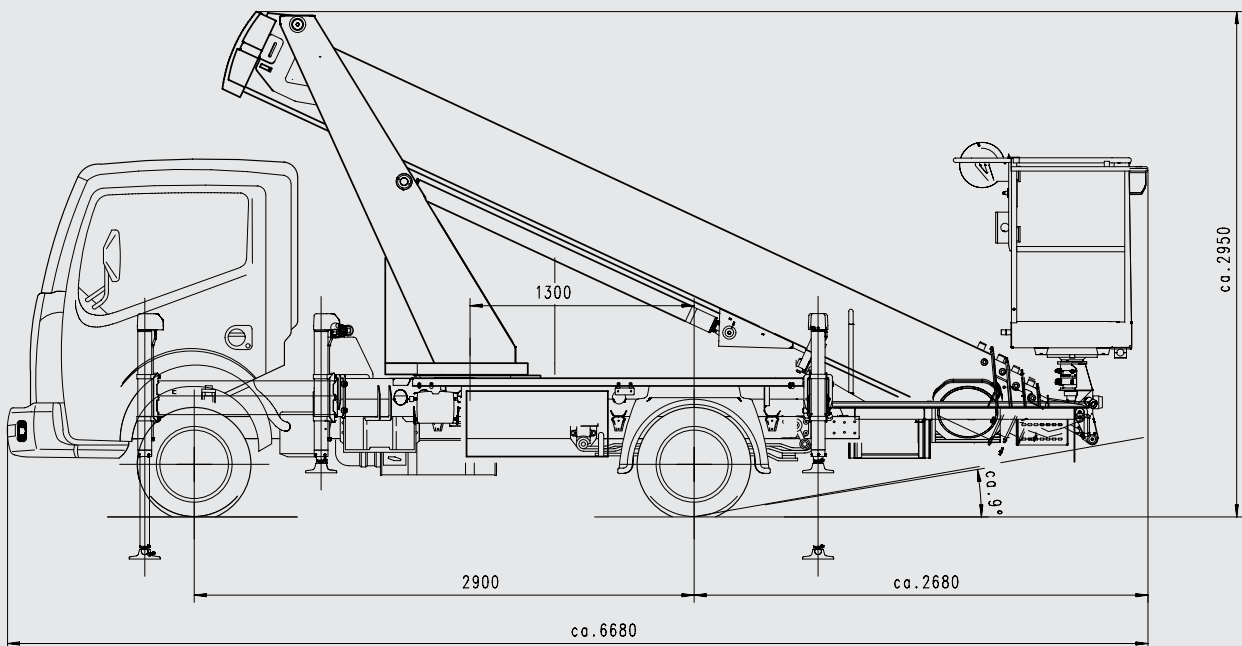


# P 220 B *Light Class*

## WORKING DIAGRAMS



## DIMENSIONS





- Ideal as a rental or for municipal applications
- Rugged and at the same time lightweight aluminium construction
- An array of comfort functions that make an operator's life a whole lot easier
- Meets the highest demands on profitability and work safety required in the "pick up & go" business
- Efficient Control System
- Slewing within the vehicle width
- Variable Hydraulic Outriggers

## TECHNICAL SPECIFICATIONS

Max. working height	21.9 m
Max. cage bottom height	19.9 m
Max. outreach to the side (incl. hand area)	12.5 m
Max. outreach to the back (incl. hand area)	16.6 m
Angle of main boom	78°
Rotation angle of turntable	500°
Rotation angle of cage	2 x 90°
Rotation angle of cage boom	-
Max. cage load	230 kg
Size of cage	1.4 x 0.7 x 1.1 m
Max. inclination of platform	5°
Height in transportposition	2.95 m
Width in transportposition	2.22 m
Overall length	6.68 m
Wheelbase	2.9 m
Overall weight with persons in the cab	3330 kg

## OPTIONAL

Automated positioning system	yes
Battery voltage monitor	yes
Memory function	yes
Home function	yes

# LIFETIME EXCELLENCE

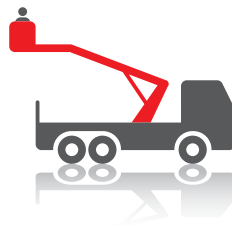
THE RESULT IS **PALFINGER ACCESS PLATFORMS** FEATURING THE MOST STATE-OF-THE-ART HEIGHT TECHNOLOGY THAT ACHIEVE ABSOLUTE PEAK PERFORMANCES, EVEN WHEN CONFRONTED WITH THE MOST DIFFICULT OF JOBS IN PRACTICE. **DEVELOPED FOR THE GLOBAL MARKET, DESIGNED FOR THE FUTURE.**

BETTER  
SOLUTIONS

BETTER  
EFFICIENCY

BETTER  
ERGONOMICS

HIGHER VALUE  
RETENTION



HIGHER  
AVAILABILITY

HIGHER  
SERVICEABILITY

BETTER  
ECOLOGY

MORE  
RELIABILITY

For further information please visit: [www.palfinger.com/thebrand](http://www.palfinger.com/thebrand)